

F2020

Impact Report



APRIL 1, 2019 - MARCH 31, 2020

F2020 Report

The vision of the MRP Foundation is to empower young South Africans to break the cycle of poverty and inequality as they journey from school into a career. As a youth development organisation, the purpose of the Foundation is to unlock tomorrow's potential through education and skills development programmes.



R17,072,650
invested into skills development



R19,213,095
invested into education



100%
of public donations go
to programmes



Level 1 B-BBEE



99%
of individuals participating in
programmes are from previously
disadvantaged communities





The holistic education programme aims to cultivate quality educational environments through supporting school management and leadership, developing educators, involving parents and communities and holistically developing learners. In F2020 the programme was active in 98 primary schools in low-income communities across the country: Tongaat (20), Hammarsdale (20), QwaQwa (20), Soweto (20) and Mitchell's Plain (18).



98 Primary Schools
on the programme



18 High Schools
active through Physical Education lessons



77,818 Learners
benefited from the programme



4 Provinces
KZN, Gauteng, Free State & Western Cape



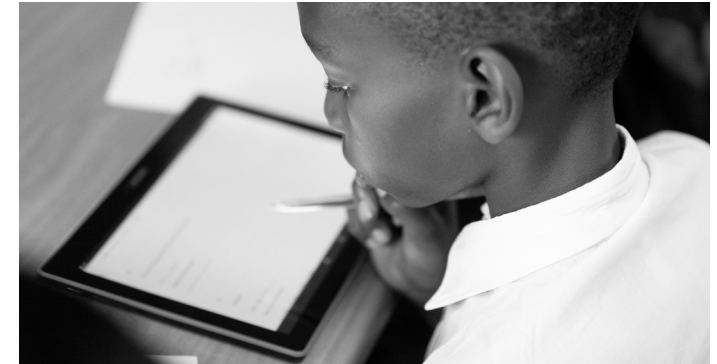
62 Early Childhood Centres
supported



2357 Educators
empowered with professional skills and content knowledge

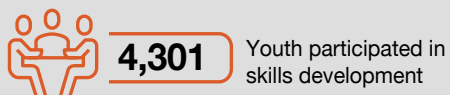
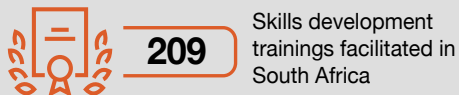


366 Educator Workshops





Jump Start unlocks career potential and fast-tracks careers for unemployed youth in the retail and manufacturing sectors. Through life skills and training, the skills development programmes bridge the gap between school or tertiary education and the world of work. Partnerships with industry and Employer Partners ensure youth are better prepared for employment and where possible, are connected to career opportunities.



10th edition ride for mrp foundation 2019

74 cyclists

21.1 million funds raised

245 million AVE (media exposure)

Connect

✉ info@mrpfoundation.org

📘 MRP Foundation

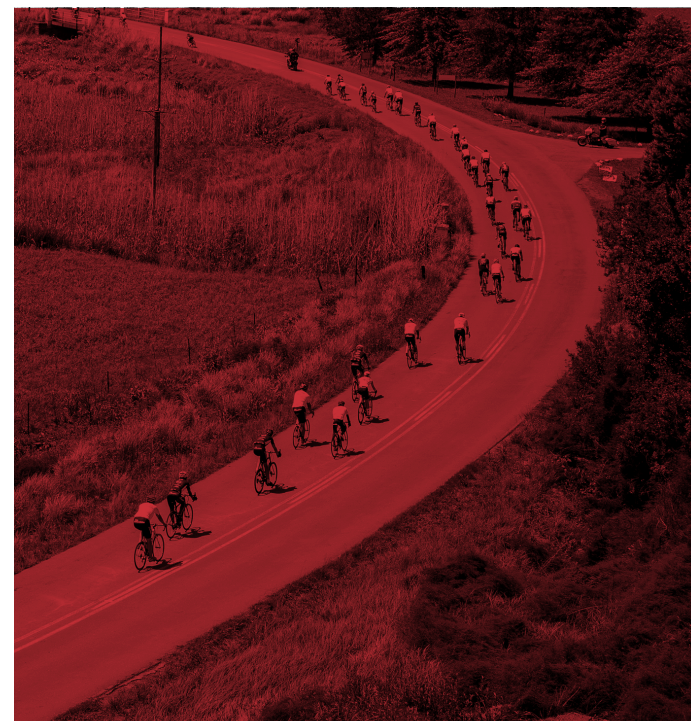
🐦 @MRP_Foundation

📷 mrp_foundation

📺 MRP Foundation

🌐 LinkedIn

www.mrpfoundation.org



STATEMENT OF FINANCIAL POSITION

AS AT 28 MARCH 2020

<i>Figures in Rands</i>	2020 R	2019 R
Assets		
<hr/>		
Non-current assets	3 767 321	2 632 420
Property, plant and equipment	566 176	285 781
Intangible assets	2 115 851	2 346 639
Right-of-use assets	1 085 294	-
<hr/>		
Current assets	16 188 563	17 867 598
Trade and other receivables	4 304 181	4 154 960
Prepayments	371 914	574 075
Cash and cash equivalents	11 512 468	13 138 563
<hr/>		
Total assets	19 955 884	20 500 018
<hr/>		
Equity and Liabilities		
<hr/>		
Equity		
Accumulated funds	16 163 883	16 163 883
<hr/>		
Non-Current Liabilities	899 189	-
Lease liability	899 189	-
<hr/>		
Current Liabilities	2 892 812	4 336 135
Trade and other payables	1 215 150	2 032 034
Leave pay and incentive accruals	309 294	476 511
Current portion of lease liability	206 282	-
Deferred income	1 162 086	1 827 590
<hr/>		
Total equity and liabilities	19 955 884	20 500 018

STATEMENT OF COMPREHENSIVE INCOME AND ACCUMULATED FUNDS

AS AT 28 MARCH 2020

<i>Figures in Rands</i>	2020 R	2019 R
Revenue	40 098 500	44 707 519
<hr/>		
Expenditure	40 182 928	41 331 082
Project expenditure	35 044 569	36 579 585
Administrative expenditure	5 138 359	4 751 497
<hr/>		
(Loss) / profit before net finance income	(84 428)	3 376 437
Finance costs	(44 686)	-
Finance income	129 114	118 307
<hr/>		
Surplus for the period	-	3 494 744
Accumulated surplus at the beginning of the period	16 163 883	12 669 139
<hr/>		
Accumulated surplus at the end of the period	16 163 883	16 163 883

STATEMENT OF CHANGES IN EQUITY

AS AT 28 MARCH 2020

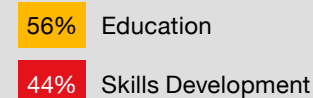
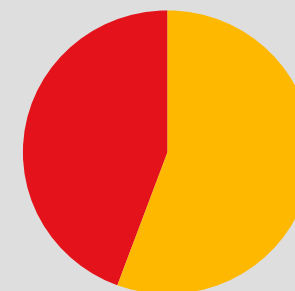
<i>Figures in Rands</i>	<i>ACCUMULATED FUNDS</i> R
Balance at 01 April 2018	12 669 139
Total comprehensive income	3 494 744
Surplus for the year	3 494 744
Other comprehensive income	-
<hr/>	
Balance at 01 April 2019	16 163 883
Total comprehensive income	-
Surplus for the year	-
Other comprehensive income	-
<hr/>	
Balance at 28 March 2020	16 163 883

STATEMENT OF CASHFLOWS

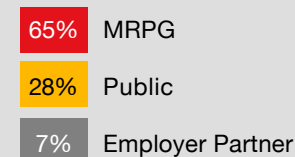
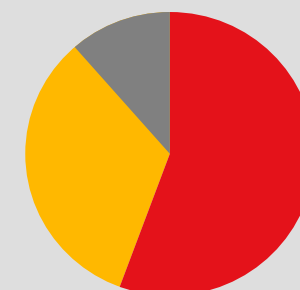
FOR THE YEAR ENDED 28 MARCH 2020

Figures in Rands	2020 R	2019 R
Cash flows from operating activities	(596 756)	3 203 034
Cash generated from operations	(725 870)	3 084 727
Finance income	129 114	118 307
Cash outflows from investing activities	(904 339)	(589 617)
Additions to property, plant and equipment	(431 396)	(16 500)
Additions to intangible assets	(472 943)	(573 117)
Cash outflows from financing activities	(125 000)	-
Repayment of lease liability	(125 000)	-
Net increase in cash & cash equivalents	(1 626 095)	2 613 417
Cash and cash equivalents at the beginning of the year	13 138 563	10 525 146
Cash and cash equivalents at the end of the year	11 512 468	13 138 563

% BREAKDOWN PROJECT COSTS F2020



% BREAKDOWN DONATIONS F2020





mrpfoundation

Thank you!